

HOLT 2008

ELEMENTS OF LITERATURE

*The PASSION of Literature
The POWER of Learning
The PROVEN Program*

**TECHNOLOGY
INSTRUCTIONS**

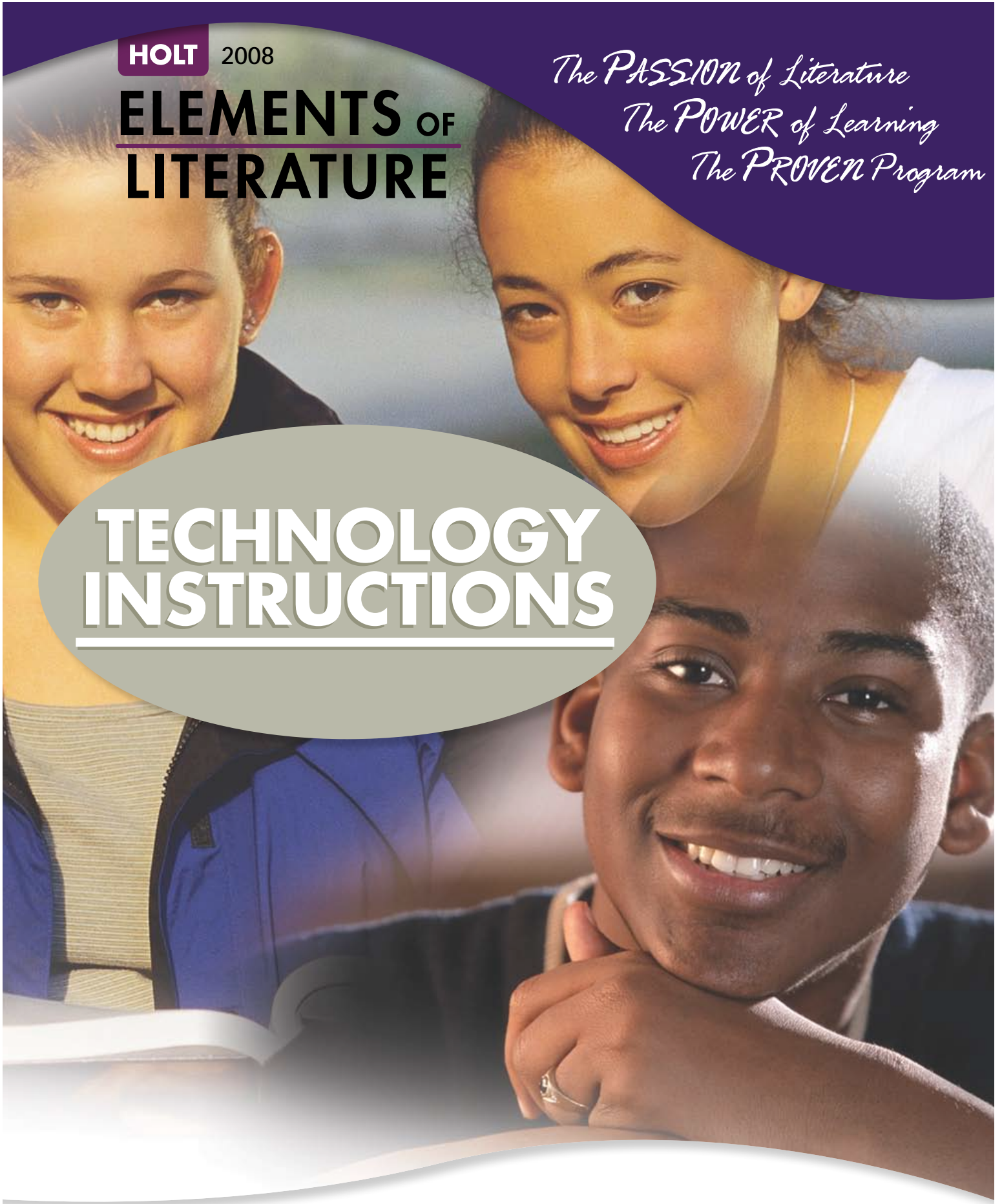


Table of Contents

Technology Coordinator Instructions.....	3
Technology Components.....	4
State Resources.....	5
One-Stop Planner.....	6
Exam View Test Generator.....	9
Mind Point Quiz Show.....	14
Holt Online Product Registration.....	15
Novel Wise and Writers' Lives.....	17
Holt Online Assessment.....	18
Online Essay Scoring.....	21
Calendar Planner.....	23
Holt Puzzle Pro.....	25
Virtual File Cabinet.....	26

Dear Technology Coordinator,

Thank you in advance for your technical assistance with the upcoming technology in-service training. We will be working with the *Elements of Literature* **One-Stop Planner®**, which consists of two CD-ROMs containing all of the teacher resource materials for the program. The CD contains the installation software for the **ExamView® Test Generator** program, **Holt Calendar Planner**, and **Holt PuzzlePro®**. For your convenience the CD also includes a version of Adobe Acrobat Reader®, but you may wish to use a newer version that can be found on Adobe's web site.

For this training, teachers will need to be able to view the CD-ROM to see the .pdf files of the print ancillaries and access the test generator and the banks that ExamView will load at installation. All software included is designed to be compatible on both Macintosh® and Windows® platforms.

Teachers and students will also need access to our educational web site, **go.hrw.com**, where they can access literary links, author biographical information, projects and activities, and interactive writing and vocabulary activities.

We will also be registering teachers for online privileges on the **Holt Online Learning** web site. Registering will allow teachers to set up classes that will assign user names and passwords to their students. Students then may access the online textbooks and Holt Online Assessment. These resources are hosted on our web site; therefore, all you will need is Internet access to the site **my.hrw.com**. In order for students to view the online books and use interactive lessons, the following plug-ins should be available to the browser: **Flash 6.1+**, **Shockwave 8.5.1+**, **Quicktime 5+**, **Adobe Acrobat Reader**.

Should you need assistance with any aspect of installing the software, please contact **Technical Support at 800.323.9239**. They are available Monday through Friday from 6:00 am to 12:00 am (EST) and on Saturday from 8:00 am to 5:00 pm (EST).

Thank you,

*The Holt, Rinehart and Winston
Educational Consultant Team*

Technology Components

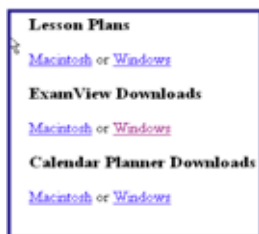
COMPONENT	DESCRIPTION	CONNECTION TO CORE CONTENT
Audio CDs	Audio CDs of most of the selections	Dramatic readings by professional actors of most of the reading selections; key selections read in Spanish; and summaries for most selections in Spanish.
Holt Calendar Planner	Curriculum mapping tool	Calendar making tool linked to print ancillaries and lesson plans. Automatic pacing suggestions based on field testing. Fully editable so that teachers may adjust lesson pacing as needed. Note: Install this from the State Resources folder on One Stop Planner® CD.
Fine Arts Transparencies	Transparencies	Classic and contemporary art that complements literary selections and helps students to make cross-curricular connections.
Holt Interactive Spelling CD-ROM (Grades 6-8)	Student tutorial for spelling strategies	Game-like practice and review activities for grades 6-8 ; full audio support for instruction; lessons progress so that students practice spelling in context of proofreading to assure relevance to the writing process.
One-Stop Planner® CD-ROM	CD with core resources, lesson plans, test generator, calendar tool, and puzzle maker	Digital copies of all print ancillaries, links to online resources on go.hrw.com , links to test generator banks, calendar planner, and puzzle maker. ExamView® Test Generator tool contains all test items in editable banks and is capable of uploading tests to HRW web site. Question banks are correlated to core content objectives and state standards.
Holt Online Assessment	Online record keeping system for students' work and teachers' assignments	A tool for monitoring student progress through student mastery and recording and analyzing scores. Keeps records of student scores on diagnostic and summative tests; keeps records of student notebook entries; allows teachers to post ExamView® generated tests.
Premier Online Edition	Online digital version of print Student Edition	Online Student Edition with interactive features such as a student notebook, audio and video links, and author links.
Holt Online Essay Scoring	Online writing practice	System that automatically scores student essays on-line.
PowerNotes™ CD-ROM	PowerPoint® presentations	Fully editable PowerPoint® presentations illustrate warm-ups, additional examples, and quizzes.
PuzzlePro®	Vocabulary activities	Puzzle making tool with links to grade level vocabulary banks. Editable. Note: Install this from the "Installers" folder on One Stop Planner® CD.
Visual Connections DVD	DVD	Short video clips of author biographies, interviews, historical summaries and cross-curricular connections.
go.hrw.com	Monitored internet site	Author biographies; literary elements information; interactive writers' models; interactive vocabulary-building activities; cross-curricular projects connected to the literature; video clips from historical speeches; research/media literacy activities.
www.hrw.com	Corporate Internet site	Contains product catalogs and additional teacher information.

State-Specific Resources

DOWNLOADING LESSON PLANS WITH STATE OBJECTIVES

Before downloading, create a folder in the location where you save your lesson plans—a location where you will know where you put it (for example, in **My Documents**, create a file called **Lesson Plans**).

1. From your **One-Stop Planner®**, click the gold **State-Specific** button on the opening screen.
2. From the map, click on your state.
3. From the **Lesson Plan** menu, choose either **Macintosh** or **Windows**.

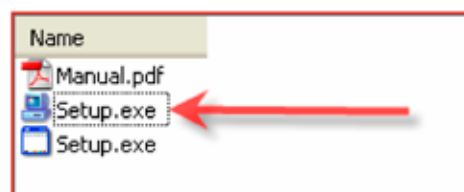


4. Choose **Save** and select the folder you have just created. Click **Save** again. After the .zip file has downloaded, click **Open Folder**. You will have a zipped folder called **Lesson** (or one similar to the title pictured).
5. At this step, operating systems differ. For **Windows XP**, right-click and choose **WinZip**, **Extract** from the drop-down menu. For **Macintosh** instructions, refer to your help menu or call **Technical Support** to assist you if you do not know how to extract a zipped file.
6. A new file folder has been created (i.e.: EOLit07 First Course LPs). This folder contains subfolders with new .pdf and editable Work, Works, and Claris lesson plans. These lesson plans have the state objectives in them. They are **NOT** connected to the editable lesson plans from the **One-Stop Planner®**, however. If you want to use these after previewing from the **One-Stop Planner®**, you will need to manually open the individual lesson plan.



DOWNLOADING EXAMVIEW® WITH STATE OBJECTIVES

1. From the **ExamView Downloads**, choose either **Macintosh** or **Windows**.
2. Choose **Open**. This could take some time. You may also choose to **Save** and then open the file later.
3. After the .zip file has downloaded, you will have three files.
4. Choose **Setup.exe**.



This will install a new version of **ExamView®** with your state objectives. You will find the state objectives on the **answer key** of the tests you create.

****Download other state correlated programs from this site.**

One-Stop Planner Guide

ONE-STOP PLANNER® CD-ROM TEACHING RESOURCES

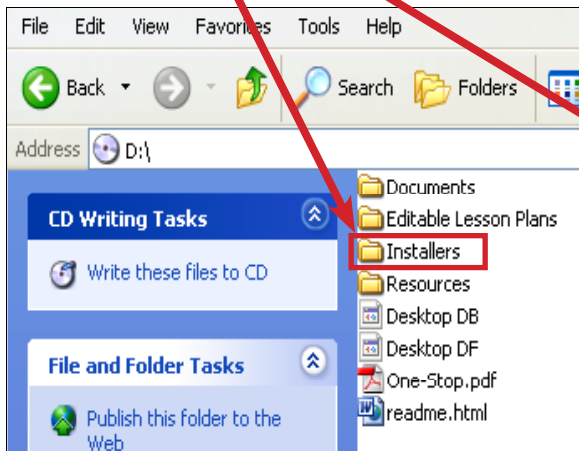
- + Printable student worksheets and tests; teaching transparencies
- + Editable lesson plans with links to collection resources
- + Test Generator with ExamView® Software
- + Answer Keys
- + A direct launch to internet sites that contain valuable teaching and learning resources, including go.hrw.com and state-specific sites.
- + Holt PuzzlePro® puzzle maker
- + Holt Calendar Planner with preset pacing guides

Note: The collection resources are divided up between two CDs. Each CD has the installation package available.

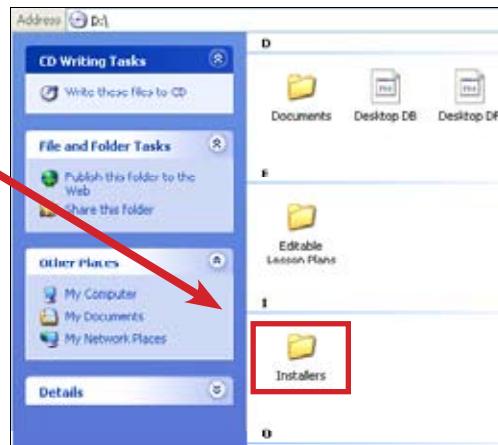
INSTRUCTIONS FOR THE INSTALLER DISC

1. After inserting CD into CD drive, the disc should automatically open. If it does not, you will need to open "My Computer" and then double-click to open the EOLit disc. Open the folder "Installers" from either the "List" or "Icon" view.

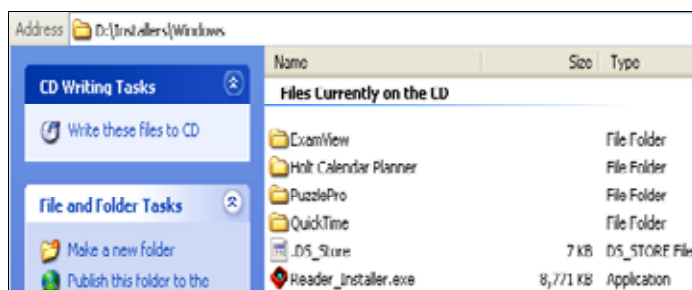
"LIST VIEW"



"ICON VIEW"



2. There are five programs you will need to install: ExamView®, Holt Calendar Planner, PuzzlePro®, Quick Time, and Adobe Reader.

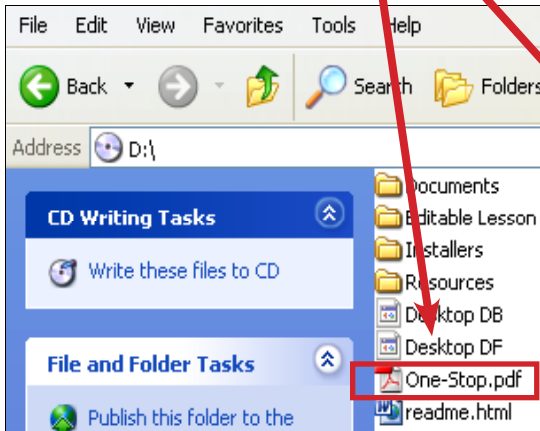


One-Stop Planner Guide

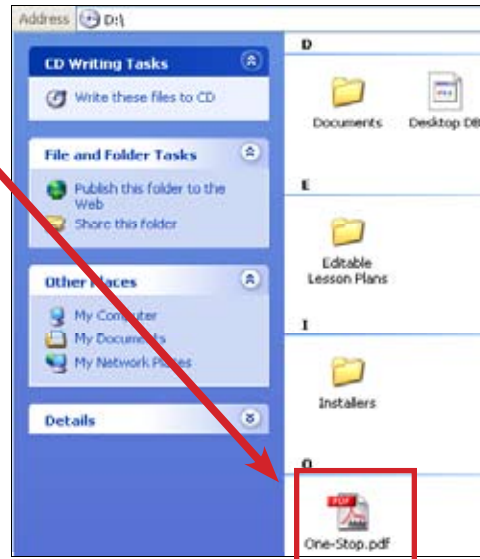
INSTRUCTIONS FOR USING THE ONE-STOP PLANNER® CD-ROM

1. After installing all of the programs that you need, access the one-stop planner teacher resources by double-clicking "One-Stop.pdf" in the "list" or "icon" view:

"LIST VIEW"



"ICON VIEW"



2. After you open the "One-Stop.pdf" file, click on the "Go to One-Stop Planner" button.



3. Notice that you will be able to access the first half of the collections on the first disc, and the second half on the second disc. Use **single clicks** to open resources from this point on.



One-Stop Planner Guide

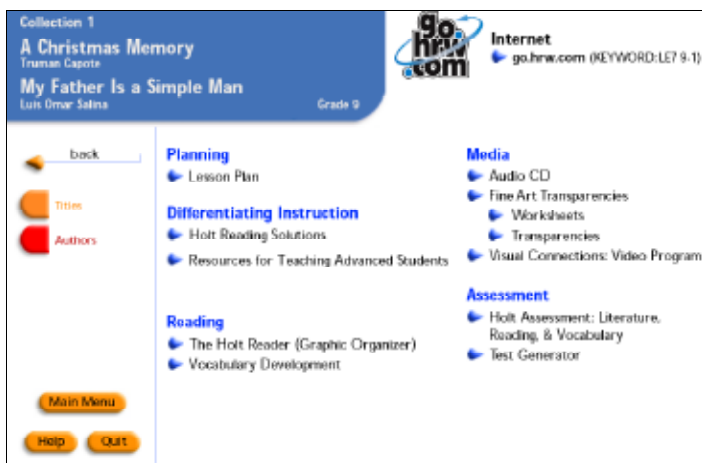
4. When you open a collection, note that there will be more than one window for each collection.



At the collection level, you can access, with a **single click**, the literary and informational selections and all of the collection resources such as the collection diagnostic and summative tests, the literary elements lesson, writing, listening and speaking workshops resources, collection review resources and advanced student resources, as well as miscellaneous collection resources such as daily language activities, *Holt Reader* and grammar worksheets.

5. After you open a **collection**, select and **single click** on a selection. At the **selection level**, you will find editable lesson plans, adapted readings, graphic organizers, vocabulary worksheets, media support, ready-to-print tests and the test generator.



Note: In order to use state-specific resources, follow the instructions on the next page.





ExamView® Test Generator

The **Exam View® Test Generator** lets you quickly create paper, Internet, and online (LAN -based) tests. You can enter your own questions and customize the appearance of the tests you create. Here are some of its features:

- + A "wizard" to guide you through the steps to create a test in less than five minutes 
- + Five ways of selecting test questions from the Holt test banks or ones you create:
 - From a list
 - Random selection
 - By criteria (difficulty code, objective, etc. -if available) 
 - While viewing questions
 - All questions
- + Edit questions or add an unlimited number of questions with 13 question types to choose from (multiple choice, etc.)
- + Change the order of questions, scramble the choices in multiple choice questions
- + Print multiple versions of the same test with corresponding answer keys
- + Format the test to match a pre-defined format, such as a particular state test layout, with a single click
- + Numerous test layout and printing options: e.g., specify the layout of a test to conserve paper
- + Modify tests for students with IEPs
- + Organize matching questions in a one or two-column format
- + Print an answer key strip and/or bubble sheet for easier test grading
- + Print a test with or without space for students to record their answers
- + Print a comprehensive answer sheet annotated with text objectives and state standards
- + Online (Internet-based) testing
- + Create a test that students can take on the Internet using a web browser
- + Publish tests directly to the Holt Testing Server

TEST BUILDER BASICS

If you want **ExamView®** to choose questions randomly from one or more question banks, choose the **QuickTest Wizard** command to create a new test. Then, follow the step-by-step instructions to:

1. Enter a test title.
2. Choose the question bank(s) from which to select questions.
3. Identify how many questions you want on the test. The **QuickTest Wizard** will automatically create a new test and display it on the screen. You can then print the test as-is, remove questions, add new questions, or edit any questions.

USING THE QUICKTEST WIZARD



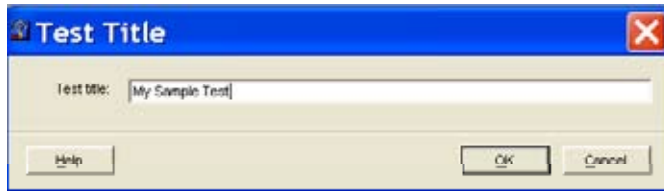
1. Click or choose **QuickTest Wizard** from the **File** menu. If you just started the program or switched to the test builder, you can choose **Create a New Test** using the **QuickTest Wizard** from the **Startup** menu.
2. Enter the test title and click the **Next** button.
3. Double-click a folder (if necessary) to display a list of question banks.
4. Choose the question bank(s) from which you want to select questions.
5. Click the **Folder** button to identify the location of the files if no question banks appear in the list. If you assigned a password to the question bank, you will be prompted to enter the password before you can continue.
6. Identify how many questions of each type you want on the test. If prompted, enter the number of matching groups you want the wizard to use when it selects the matching questions you requested.
7. Review the test summary and then click **Finish** to complete the process.
8. When you click the **Finish** button, **ExamView®** selects the questions based on your responses and displays them in the test document window.

After the program displays the test, you can edit existing questions, create new questions, select additional questions, customize the appearance of the test, save your work, or print the test. To default the number of multiple choice selections after the test is created, hold the **CTRL** key and press the **J** key on the keyboard. Place a mark in the box next to **Change the Number of Multiple Choice Items** and select a number.

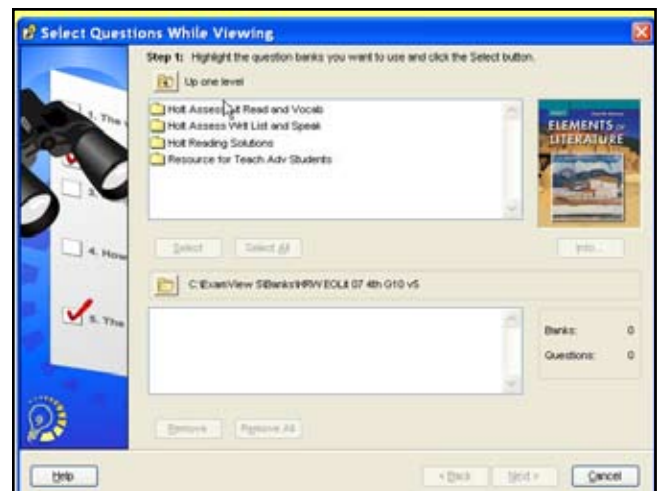


CREATING YOUR OWN NEW TEST

1. Choose the option to **Create a New Test** on the startup screen.
2. Enter a test title and then identify how you would like to choose questions from the **Select** menu. You may add questions to the test by using one or more of the question selection options: **Randomly**, **From a List**, **While Viewing**, **By Criteria**, **By Standard**, or **All Questions**.

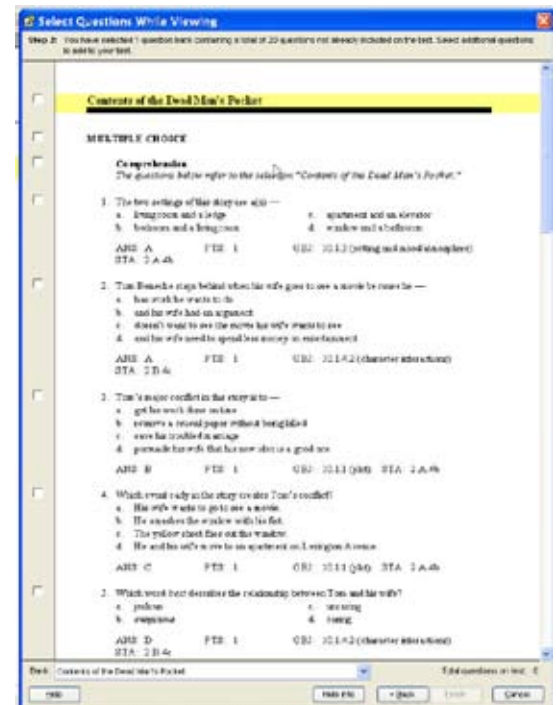


3. Choose your method, and a window will appear for you to choose the question bank(s) from which you want to select questions. You may select questions.
4. For example, if you choose **While Viewing**, the banks you selected will appear in the top window. You can view all the questions in the bank and place a check mark in the box to the left of each test item you want to include in your test.
5. When you've finished, click on the **Finish** button at the bottom of the screen to load the questions into your test.



CUSTOMIZING YOUR TEST

After you create a test, you can customize the appearance of the test by changing the order of the questions, editing test instructions, specifying the font and style for selected test elements, and choosing whether to leave space for students to write their answers directly on the test. The changes you make to the questions will not change the original question bank. Your changes are made only to the copy of the questions on the test you just created.



EDITING A TEST QUESTION

1. Highlight the question to edit in the test window.
2. Click the **Edit** button located at the bottom of the test window or double-click the question to display an editing window.
3. You can now edit the question, change the answer, update the narrative, insert a graph or equation, or modify the question information (objectives, difficulty code, reference, topic, or notes). See the **Entering/Editing Questions** help topic for more detailed instructions.
4. Click the **Record** button to accept the changes you made to the question. The program applies the changes only to the copy on the test. The original question in the question bank is not updated.

Tip: Use the **Question Bank Editor** to permanently change a question or to add a new question for use on other tests.

DELETING A TEST QUESTION

1. Highlight the question to delete.
2. Click the **Delete** button located at the bottom of the test window.
3. Confirm that you want to remove the question from the test.

Important: Removing a question you selected from a question bank does not affect the original question. However, the program will permanently delete any new question you may have created and/or a question you have edited.

Tip: Use the **Clear Selections** command to quickly delete all questions or to remove questions you selected from a particular question bank. To remove an entire question type, select the desired type and click the **Delete** button.

CREATING A NEW TEST QUESTION

ExamView® adds the new question to the current test only.

1. Click the **New** button located at the bottom of the test window or press **CTRL+N**.
2. If prompted, specify the type of question to create.
3. Enter the new question, answer, and information (optional). See the **Entering/Editing Questions** help topic for more help.
4. Record the new question.

REORDERING TEST QUESTIONS

1. Choose **Reorder** from the **Question** menu.
2. Click and drag an individual question, a question type group, or a narrative group to the new location in the list. You can also press **CTRL+UP ARROW/DOWN ARROW** to move the highlighted question.

RULES:

- + You can move a question only within the same question type.
 - + To move an entire question type group (e.g., multiple choice), click on the question type and drag it to the desired location.
 - + You can move a group only to certain places in the list. The insertion bar appears as a thick line to indicate where you may move the question group.
 - + Questions attached to a narrative can be moved only within the same narrative group.
 - + A question that is not a part of a narrative group cannot be moved into that group. Likewise, you cannot move a question linked to a narrative outside of the group.
 - + Matching questions can be moved only within the same matching group.
3. Repeat **Step 2** for each item you want to move.
 4. Click **OK** to update the current test.

SCRAMBLING TEST QUESTIONS

You can use the **Scramble** option if you want to randomly arrange the questions on a test. This option permanently changes the question order on a test.

1. Choose **Scramble** from the **Question** menu. The **Scramble** option is different from the **Reorder** command in that the **Reorder** command lets you move questions one at a time or in a group. You can also move them exactly where you want the questions to appear. With the **Scramble** option, the program randomly rearranges the questions. If you prefer, you can automatically generate different versions when you print a test.
2. Choose one or more of the scramble options: **Sections, Questions, or Choices**.
3. You may assign a new test ID (A-Z) each time you scramble the questions.
4. Click **OK** to scramble the current test.

When you have finished creating your test, you can print it and/or save it. Choose **File>Print** to print a test. You may choose how many copies of the test you want, whether you want all the copies to be the same, whether you want to scramble the questions and the multiple choice options. If you scramble the questions, **ExamView®** will print a custom answer sheet for each variation of the test. An identification letter (A-Z) for each version will appear in the upper right-hand corner of your test and answer key. You can change the header under **Test** from the drop-down menu.

Mind Point Quiz Show



I. **Install** *MindPoint Quiz Show* (from a separate CD).

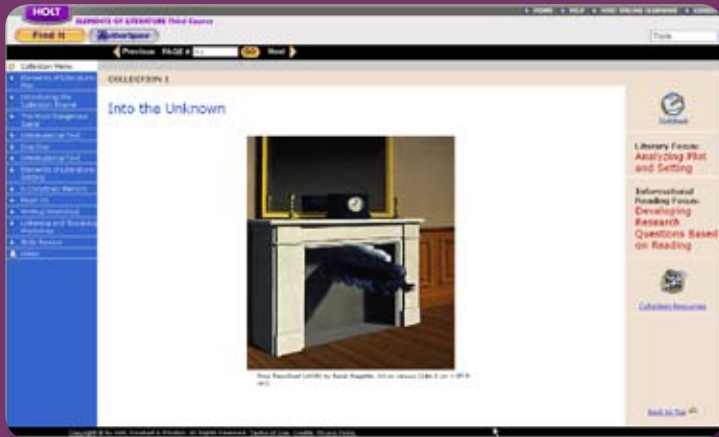
II. **Copy** the Question Bank from ExamView:

1. Go to then and open your C: Drive
2. Scroll down until you find Double click to open the folder.
3. Double click on Right click on the Holt Literature File you wish to use and then copy the file. (You may want to copy all of the files listed).

III. **Paste** the question bank into MindPoint Quiz Show:

1. Hit the two (2) times to get to the C: drive list of folders.
2. Open and scroll down until you find .
3. Open , open , and then open .
4. Right click and paste the question bank into the Question Set.

Online Product Registration



REGISTERING TEACHERS FOR PREMIER ONLINE EDITIONS AND RESOURCES

To set up a **User Name** and **Password**, please do the following:

1. Go to www.hrw.com/register
2. First time users, select **Teacher in a US School** from the drop down menu. Click **Register**.

Step 2

3. Enter your contact information. Click **Register**. **PLEASE NOTE:** You will select your own **User Name** and **Password**.
4. Select your school from the drop down menu. If your school is not listed, click **Help**. If your school is new, it may not be in the system yet. You will have the opportunity to submit a request to have your school added.
5. Enter the ISBN number from the *Teacher's Edition* of the first product you would like to register. You will be able to register other programs or texts later. You can find the ISBN located on the back of your *Teacher's Edition*. Do not type the dashes.
6. Enter the randomly selected security word as requested. **PLEASE NOTE:** The word will be from a heading or paragraph from the sections found **only** in the *Teacher's Edition*, **not** student pages.

Step 5

Step 6

7. Record your user name and password: **User name:** _____
Password: _____

Step 8

8. To add programs to your registration, in the space provided in the upper left-hand corner (blue section), simply enter the ISBN of the new text and repeat **Step 6**.
9. Log in at <http://my.hrw.com>.

REGISTERING STUDENTS FOR ACCESS TO PREMIER ONLINE EDITIONS

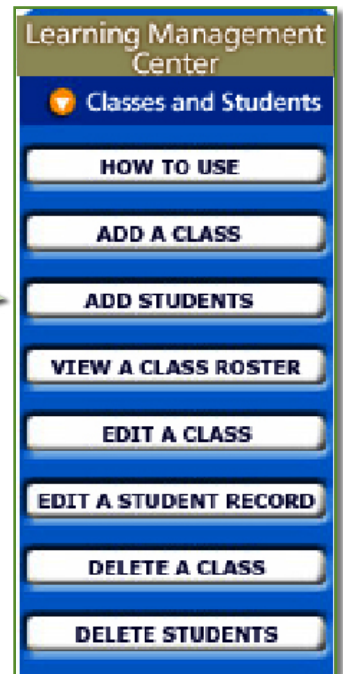
To set up a **User Name** and **Password** for each of your students please do the following:

1. Go to <http://my.hrw.com> and log in.
2. Click on **Add a Class** under the **Learning Management Center** on the right.
3. Type in the required class information for the class you are adding. Click **Add**.
PLEASE NOTE: Don't forget to check the box next to the textbook(s) associated with the class.
4. Select the **One Log In/Password** box to determine if the student is already registered.

Elements of Literature, Introductory Course Enhanced ©2007
 Elements of Literature, Second Course Enhanced ©2007
 Elements of Literature, Sixth Course Enhanced ©2007

Step 3

5. If you see the name of the student(s) that you would like to add to your class in the **My School** box on the left, select the student's name and click **Add**. To select multiple names, hold the **Control** key down while selecting. You should see the names appear in the **My Class** box on the right. If you located all of your students, click **Done** to save your changes. If you need to add additional students, repeat Step 5.
6. If you do **NOT** see the name(s) of the student(s) that you would like to add to your class, select the **Add New Students** button at the bottom of your screen.
7. Choose the number of students you would like to add from the drop down menu. The screen will refresh. This might take a moment. **PLEASE NOTE:** You can include the No Child Left Behind settings by selecting **Add NCLB Settings Now**. At the bottom of the screen, you will find the fields to enter the names and NCLB information of your students.
8. Click **Add** at the bottom of the screen.
9. Your student(s) now have a randomly generated **User Name** and **Password**. For a printable version of your class roster, click **Printable Version** or go to **View a Class Roster** under the **Learning Management Center**.
10. **Edit, Delete or Add** individual students or classes by selecting the appropriate task under the **Learning Management Center**. The **Learning Management Center** is always located on the right-hand side of your main subscriptions page.
11. Instruct students to login at <http://my.hrw.com>.



Add Students

To allow students to have the same User Name and Password for all Web programs, click the **One Log In/Password** button below.

Optional: select the number of students that you wish to add to your class from the dropdown menu:

Number of Students: 1

Optional to **Add Left Behind (NCLB) Subgroup Settings**: If you would like to add optional NCLB Settings as you add students to your class, click the **Add NCLB Settings Now** button below. [Learn More](#)

You can also add these settings one student at a time by clicking **Edit a Student Record** at a later date.

Add NCLB Settings Now

Fields with an * are required.

Class: 1 - Language Arts

* First Name	M.I.	Last Name	Student ID	Gender
Unknown				Unknown
Economic Status:		English Proficiency:		
Unknown		Unknown		
Ability:		Special Conditions:		Special Services:
Unknown	Autism	SP		
American Indian/Alaskan Native	Visual Impairment	SOL		
Asian	Deaf - Blindness	Gifted/Talented		

NOTE: Students never register themselves for their online textbooks.

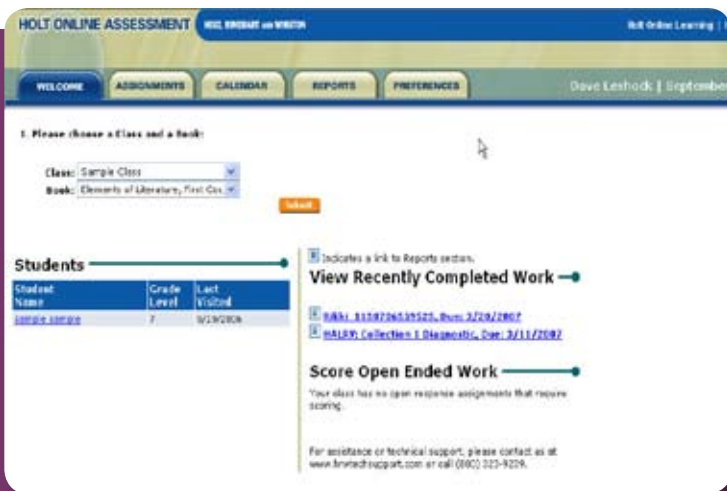
Novel Wise Writers' Lives Graphic Organizers

Novel Wise, Writers' Lives and interactive Graphic organizers are found on the Teacher's Online Textbook home page

Novel Wise - online offers additional teaching materials including: activities, assessment materials, and PowerPoint presentations.

Writers' Lives - online presents new information about favorite authors including what they wrote, why they wrote, and little known facts about their lives. Includes audio and video.

Graphic Organizers - online provides visual resources in pdf.format. Each graphic organizer includes suggested uses and lesson plans for reading, writing, and differentiated instruction.



Holt Online Assessment

Holt Online Assessment is an online program that allows you to assign online work and content to students via the Internet and view student performance via a variety of reports.

ASSIGNING ASSIGNMENTS OR TESTS WITH HOLT ONLINE ASSESSMENT

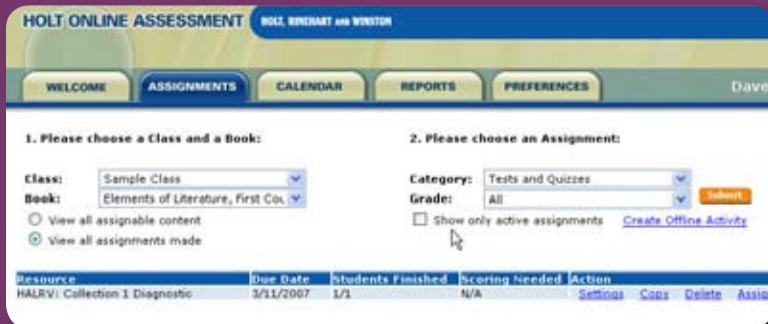
1. Log in to your Holt account at <http://my.hrw.com>. You must already be registered with Holt.
2. Under the Learning Management tools on the right side, under **Assignments**, select **Assessment**.
3. The main screen of Holt Online Assessment provides tabs to go to access your **Assignments**, **Calendar**, **Reports**, and **Preferences**.
4. On your first visit, set your preferences by clicking on the **Preferences** tab.
5. To assign a test or activity, click on **Assignments**. You will need to select your class and book, choose the category **Tests and Quizzes**, and click on the **Submit** button
6. Assessments available will be listed. You may use the links to **View** or **Assign** an assessment.
7. Verify the testing options on the pop-up window and then click **Submit**. Your test has been assigned and is now available for student completion
8. Students log in to their online account and click on the link **View Assignments** to access the test.
9. After students complete the assignment, you may generate reports using the **Reports** tab from the main screen of Holt Online Assessment.

UPLOADING AN EXAMVIEW® TEST

You may upload a test in you created in **ExamView®** for students to take online. The system will automatically score objective questions. You may include open-ended questions; the system will prompt you to score them when students have finished.

PLEASE NOTE: The upload feature works best if you are **NOT** logged in to Holt Online Assessment at the time of uploading a test.

For more information, please see page 19 of this document.



Holt Online Learning

USING EXAMVIEW® 5.0 TO PUBLISH TESTS TO THE HOLT TESTING SERVER

1. Create your test in ExamView® 5.0.

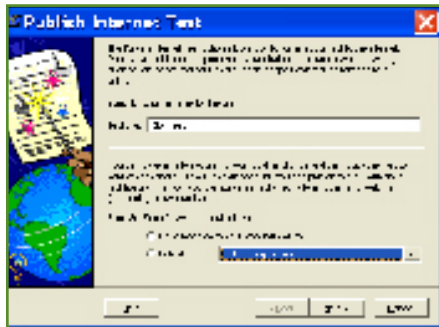
Please Note: Computer technology can grade closed-ended items that you include in your tests such as: multiple choice, true/false, yes/no, short-response fill-in-the-blank, and matching. Short answer questions must be graded by the teacher.

2. When you are finished creating your test, choose **File>Publish Internet Test**.

3. Name or re-name your test, if you wish, in the field labeled Step 1. In the dialogue box's Step 2, select **Publish Test to Holt Testing Server** (not ExamView® Testing Server).



Step 2



Step 3

4. Log in. Enter your **Holt Online User Name** (Instructor ID) and **Password** and click **Next**. You will see a progress bar informing you that your user name and password are being validated. You will also see when your test has been successfully uploaded.



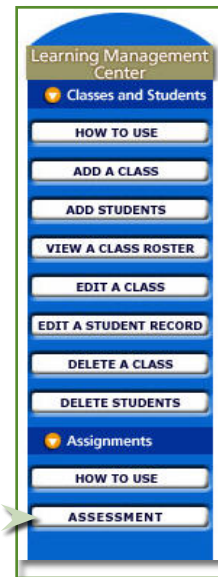
Step 4

5. Launch your **Holt Online Learning** subscription page by entering your **Username** and **Password** at <http://my.hrw.com> or go to www.go.hrw.com and click on **Online Textbooks**.



Step 5

6. Manage assignments. When your subscription page appears, go to the **Assessment** link on your Learning Management Center (right column).
7. Associate. The uploaded test will need to be associated with a text. From the main screen of Holt Online Assessment, choose the **Assignments** tab. Select your class and book, choose the category **Unassociated Uploaded Tests**, and click on the **Submit** button. Click on the **Associate** link, choose the book to which to associate this test, and click **Submit**.



Step 6

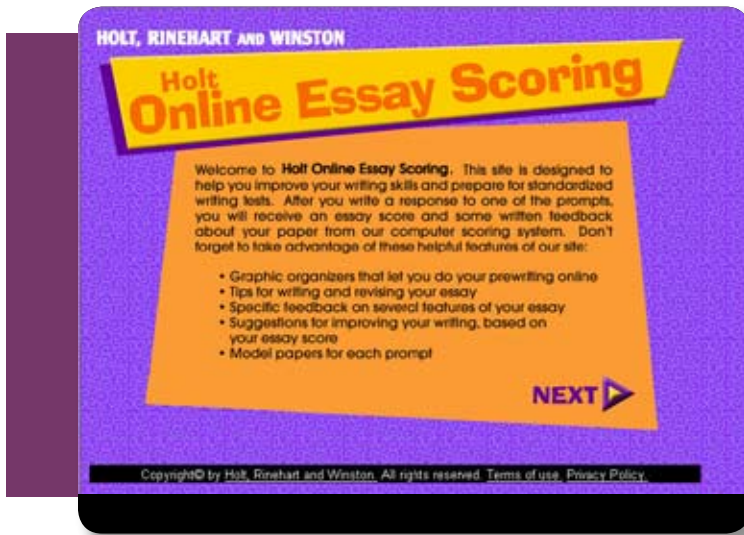


Step 7

8. Assign. Choose the category **Teacher Uploaded Tests**, and click on the **Submit** button. Click **Assign** to assign the test.
9. Configure. Verify the testing options on the pop-up window and then click **Submit**. Your test has been assigned and is now available for student completion.
10. Inform your students to log in at <http://my.hrw.com> with their **User Names** and **Passwords**. They can navigate to their assignments from their **Holt Online Learning Home Page** by clicking the **View Assignments** link under their online program. Finally, students can navigate to their personal performance reports by clicking the **Progress Reports** link.



Step 9



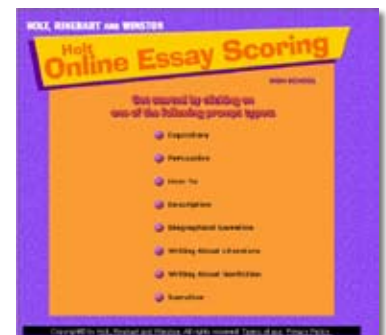
Holt Online Essay Scoring

USING HOLT ONLINE ESSAY SCORING

Congratulations on your purchase of a Holt program with Holt Online Essay Scoring. If teachers have already registered themselves and their class, they may use the following steps to set up Holt Online Essay Scoring.

STUDENT USE

1. Students log in to their online account. They should go to <http://my.hrw.com>, and then click on the “Holt Online Essay Scoring” link beneath the picture of their book.
2. Students choose a type of writing prompt (persuasive, descriptive, etc.).
3. Students choose a specific prompt from a list.
4. The prompt will appear with a space in which to write. Students may use the links for prewriting and writing tips, revision tips, or interactive graphic organizers.
5. Students click the “Get Your Score” button when finished with the essay.
6. Students receive holistic feedback and analytic feedback. They also have access to writing activities and a writing model.
7. When students exit Holt Online Essay Scoring, a separate window launches stating that their essay with feedback has been saved.



Step 2



Step 5

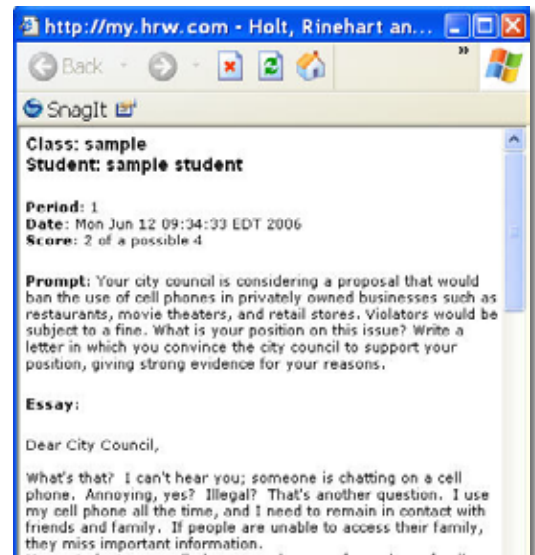
TEACHER USE

1. Log on to your online account the same way as students: go to <http://my.hrw.com>.
2. Select the “View Student Essays” link located beneath the “Holt Online Essay Scoring” link for a given book.
3. Select the class from the pull-down menu



Step 3

4. Click the link to “View Essays” for a given student.
5. The date of each student essay appears with a corresponding score listed. To see the complete essay and feedback, teachers click the date, which is a hyperlink. Another window will launch and show the essay.
6. Teacher may access a complete list of prompts from the “Teacher Support” link under the “Holt Online Essay Scoring” link below a book.



Step 5

Need assistance with registration?

TECHNICAL SUPPORT
800.323.9239

Introduction to the

Holt Calendar Planner



The **Holt Calendar Planner** helps you create a customized school-year calendar by using the same lesson plans that appear on the **One-Stop Planner®** CD-ROM. To set up your calendar, use the buttons at the bottom of the main screen in the order in which they appear: **Settings**, then **Calendar**.

SETTING

1. **School Start Date and School End Date** - In the fields at the top of the screen, enter the first and last days of your school year in the format (dd/mm/yyyy). Click the **Show** button to show the school days.
2. **Add Holidays** - A checklist of common holidays appears on the left side of the screen. Click the check box next to each to add that holiday to your calendar. Below the checklist is a toolbox for designating other "no-class days" on your calendar: **Holiday**, **In-Service/Professional Development**, and **School Break**. The program will assume that you do not teach class on these days and will not assign lessons on the marked days. Click on **Clear** to return your mouse pointer to white and to stop marking "no-class days."
3. **Cancel, Next, and Help Buttons** - **CANCEL** will open a window that asks you if you are sure you want to close without saving. You can click **YES** to exit or **CANCEL** to return to the screen. **NEXT** will take you to the second step in setting up your school year. **HELP** opens the file that contains these directions for the program.
4. **Set Class Times** - This screen allows you to set parameters for the class for which you are creating the present calendar.
 - **Class Times category** - Click one of the radio buttons to indicate the type of schedule for this class:
 - Daily/Traditional** - Choose this category if your class meets every day. **Alternating Days** - Choose this category if your class meets every other day. **Custom** - Use this category to manually choose the days a class meets by clicking the box next to the days of the week listed. You can choose multiple days from this list.
 - For all three types of class time categories, you must also assign a class length by filling in the minutes in the text field to the right.
 - If you select **Alternating Days**, there is an additional text field to enter the **Class Start Date**. Enter the first day the class will meet.
 - Name your **Calendar/Class**. A text field for assigning a name to your class calendar will appear at the bottom of the screen. (Example: 5th Period Literature Class)

CALENDAR

After you have set up a calendar with the school-year dates and class times, use the **Calendar** screen to fill in the calendar with customized lesson plans by dragging groups of materials or individual items from the **Lesson Plan** pane to the calendar.

5. Lesson Plan Pane - On the left side of the **Calendar** screen

At the top of the pane is a drop-down menu for **Lesson Plans** as well as **Student** and **Teacher Resources**.

Double-click on items to expand or collapse sections of the lesson plans. Resources appear in blue; double click a resource to open the appropriate PDF document. Drag items from the Lesson Plan pane to your calendar.

6. Calendar Pane - On the right side of the screen

- Use the **Month/Year** drop-down menu at the top of the pane to view a different month within your school year.
- Use the **Change View** drop-down menu to change the calendar display: 9-, 8-, 6-week, Month, Week, or Day
- When in the Day view, click the **Print Resources** button to print all of the worksheets and other handouts included in that day's lesson plan.
- Once items are in your calendar, you can open and collapse sections the same way you do in the **Lesson Plan** pane. **Day** view allows maximum viewing area for that day's lesson plan and resources.
- When in the **Month, 6-, 8-, or 9-Week** views, double-clicking on a specific day will take you to that **Day** view. Simply double-click on the **Day** view to return to the previous view.

7. Customizing Calendar - Other options

To add or insert special assignments, or make additions to a day's lesson plan, drag and drop the items in the **Day** space on your calendar. You will be asked if you want to add or insert the item.

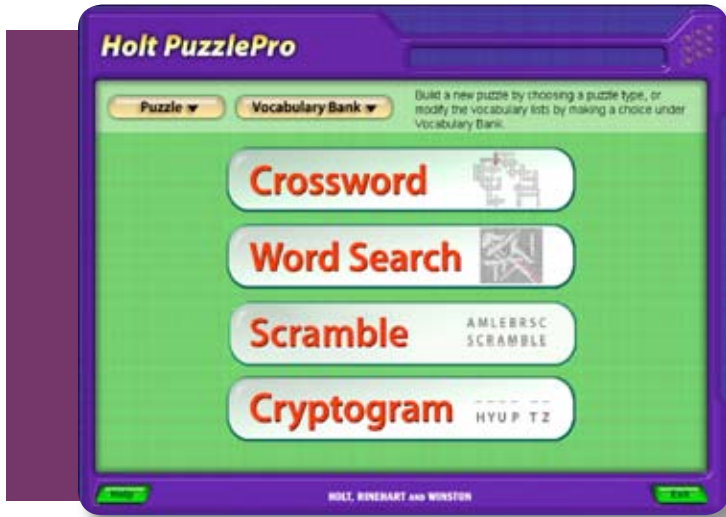
- Use the **Note** button to further customize the **Calendar** pane. When you click on the **Notes** button, a pop-up window will appear. You can use this window to insert your own text into the **Calendar** pane, such as additional lesson plans for materials not included in the textbook, additional teaching notes, or additional information about the pacing of a particular lesson. You can also use it to insert blank days or to set aside days for review.

8. Navigating - **Previous** and **Next** buttons allow you to navigate to the previous or next day, week, month, etc, depending on your current view.

9. Printing Your Calendar

- The Calendar View option prints the Calendar pane of the view you are currently using.
- The Full Text Report option prints a text-only version of your current view.

**If you are having difficulty installing or saving your calendar settings, it may be that you do not have the correct user privileges set for this program. To use this program, you must have Power User privileges, or have your administrator set the user data folder inside the Holt Calendar Planner folder to have read, write and modify privileges for users.*



Holt PuzzlePro® Basics

BUILDING A PUZZLE

1. Double click on the **Holt PuzzlePro®** icon on the desktop. In Windows, you may also navigate to the **Program** folder using the **Start** button. The **PuzzlePro®** splash screen displays.
2. Select the type of puzzle to be built from the **Main Menu** or the **Puzzle Menu**.
3. Follow the instructions near the top right-hand corner of the screen.

EDITING A BANK, LIST OR TERM

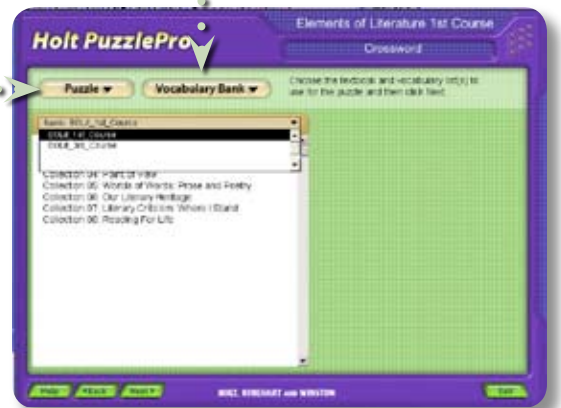
1. Double click on the **Holt PuzzlePro®** icon on the desktop. In Windows, you may also navigate to the **Program** folder using the **Start** button. The **PuzzlePro®** splash screen displays.
2. Make a selection from the **Vocabulary Bank** menu.

PLAYING A PUZZLE

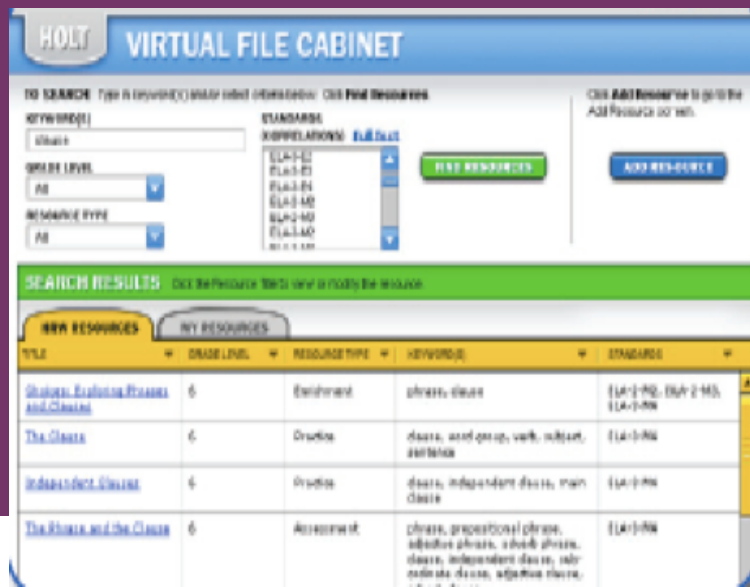
1. Double click on the **Holt PuzzlePro®** icon on the desktop. In Windows, you may also navigate to the **Program** folder using the **Start** button. The **PuzzlePro®** splash screen displays.
2. Select a puzzle from the **Puzzle** list and click **OK**.
3. Enter your name in the dialog box that displays and click **OK**.

TO ADD YOUR OWN VOCABULARY LIST

1. Click on the **Vocabulary Bank** menu, and select **Edit List**.
2. At the bottom of the window, chose the button **Add List**.
3. The new list will have the default name of "New List 1. ." You may change the name using the window on the right.
4. To add terms to your list, click on the **Vocabulary Bank** menu, and select **Edit Term**. Using the windows on the right, enter your terms and definitions and click **OK**. Your terms are now available to build puzzles.



Virtual File Cabinet



The Holt Virtual File Cabinet is a separate CD designed for EASE of use; all resources are Editable, Adaptable, Searchable, and Expandable. You will have many resources from grade 5-grade 12 available to help your students learn grammar, usage, and mechanics. You can quickly browse through the entire library to find the exact resource you want.

You can filter by keyword, grade level, resource type and standards. You can modify the search data, edit the resource, add a note or print the worksheet from this screen if you wish. You can add resources that you have created and that have worked well for your students.

Complete installation instructions for both Mac and Windows are found inside the front of the disc. Easy to use instructions as well as a demonstration tour on found on the main login page.

My Notes...

The PASSION of Literature
The POWER of Learning
The PROVEN Program

Technology Product Support

hrwtechsupport.com

step-by-step instructional documents for
teachers

This information applies to all Language Arts programs.

One-Stop-Planner

Exam View

Holt Calendar Planner

Holt PuzzlePro

MindPoint Quiz Show

Downloading State Specific Resources

Holt Online Assessment Platform (HOAP)

PowerNotes

Holt Online Learning

Online Edition

Essay Scoring